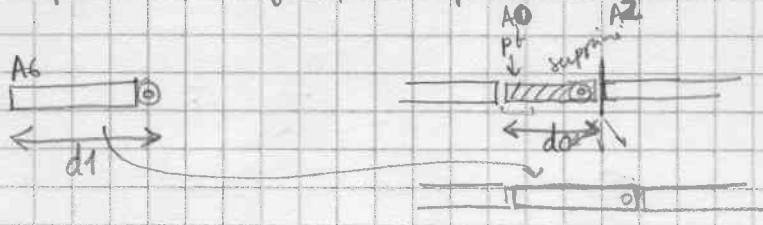


Remplace la ligne printe par lire A6



```

XRPL: LEA TPINS, A0
      MOVE.L TPINS, A0
      CMP.B #0, (A0)
      BEQ XINSIA
      MOVE.L A0, A2

```

→ si pointeur en fin : insert

```

GER10: TST.B (A2)+
       BNE GER10
       MOVE.L A6, A1

```

```

GER11: TST.B (A1)+
       BNE GER11

```

```

       MOVE.L A2, D0
       SUB.L A0, D0
       MOVE.L A1, D1
       SUB.L A6, D1
       MOVE.L D0, D3
       CMP.L D1, D3
       BLE GER12
       MOVE.L D1, D2

```

Annotations:   
 - `ADD.L D1, (SP)` with arrow pointing to `D0` and label "nouveau TPINS"   
 - `MOVE.L A0, -(SP)`   
 - `ADD.L D1, (SP)`   
 - `MOVE.L A6, A1`   
 - `ADD.L D1, (SP)`   
 - `d3 = min(d0, d1)`

```

GER12: SUB.L D3, D0
       SUB.L D3, D1
BRA GER14

```

```

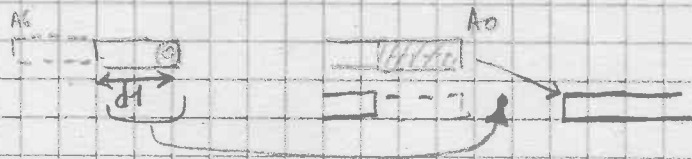
GER13: MOVE.B (A1)+, (A0)+

```

```

GER14: SUBQ.L #1, D3
       BNE GER13
       MOVEQ #0, D2
       TST.L D1
       BEQ GER16
       BSR XINS

```



```

GER15: MOVE.L (SP)+, TPINS
       ADDQ.L #1, TDMod
       RTS

```

```

GER15: LEA TPINS, A0
       MOVE.L (SP)+, (A0)+
       ADDQ.L #1, (A0)+
       ADDQ.L #1, TDMod
       RTS

```

```

GER16: TST.L D0
      BEQ GER15

      MOVE.L A0, A1
      ADD.L D0, A0
      BSR XDEL
      BRA GER15

```

