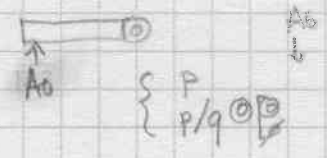


1) Pose en libre la chaîne représentant $\{A0\}$
format P/q



```

⊗ XPRTA2: MOVE (A0), D0
          BCLR #13, D0
          BEQ  XPRTA1 → P
          BCLR #13, D0
          BEQ  XPRTA1 → P
          MOVE.L A0, A1
          AND #FFFF, D0 BSR  SLNHO
          ADD  D0, A1
          MOVE.L A1, -(SP)
          BSR  XPRTA1 ← MOVE.L A0, A2
          MOVE.L (SP)+, A0
          MOVEM.L A2/A6, -(SP)
          BSR  XPRTA1
          MOVEM.L (SP)+, A0/A2
          MOVE.B #" / ", -(A2)
          TST.B  -(A2)
          BNE  KB22
          LEA  1(A2), A1
          BRA  KB21
  
```



```

MOVE.L A2, A1
TST.B  -(A2)
BEQ  KH41
RTS
  
```

```

Sub  $\{A0\}$  sur l'écran
XPRTA2: MOVEM.L A0-A6/D0-D6, -(SP)
XPRTA2: BSR  XPRTA2
          MOVE.L A0, A6
          BSR  X15
          MOVEM.L (SP)+, D0-D6/A0-A6
          RTS
  
```